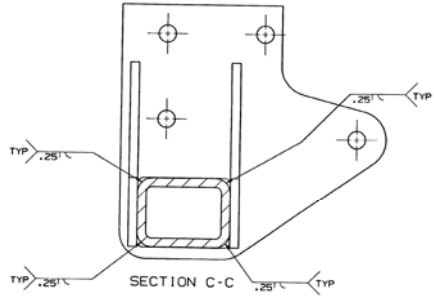
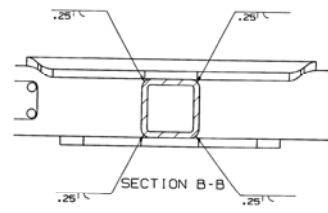
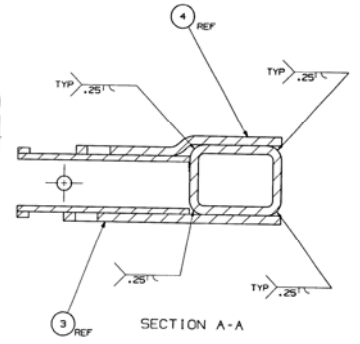
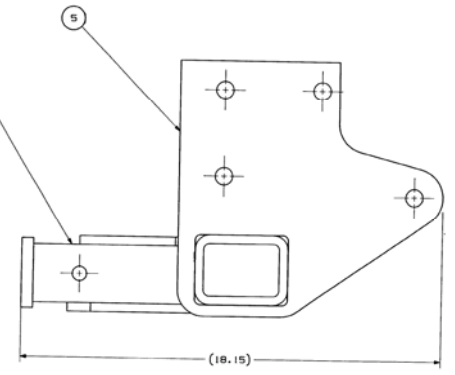
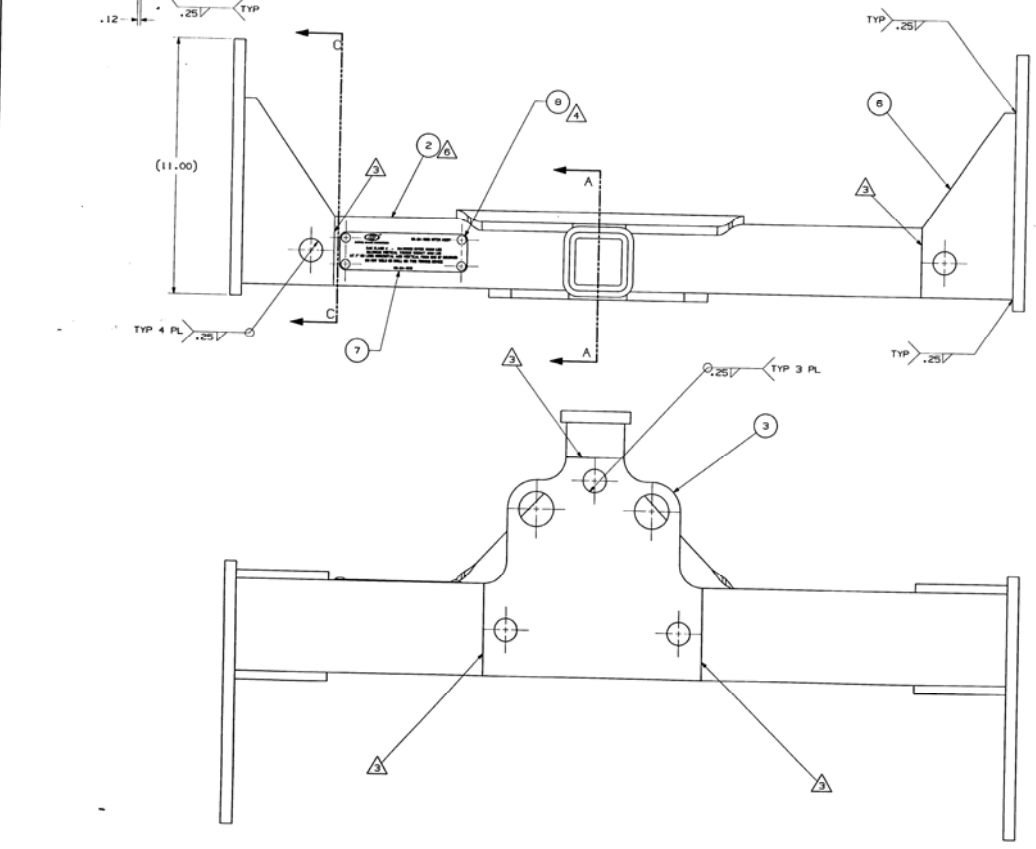
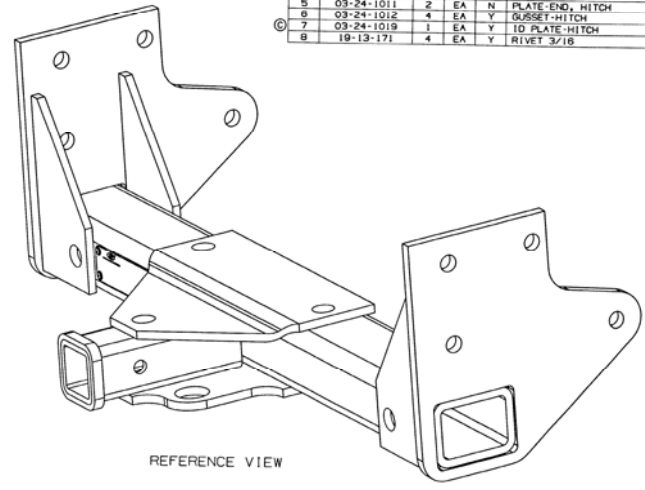
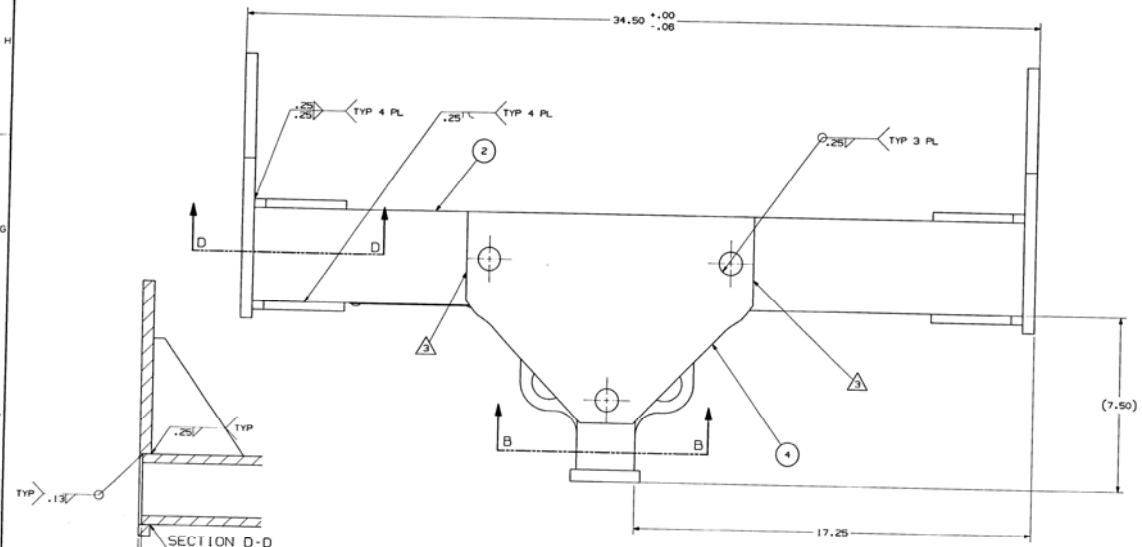



ITEM	PART NO.	QTY	U/M	SER	DESCRIPTION
1	03-24-1007	1	EA	N	RECEIVER-HITCH
2	03-24-1008	1	EA	N	TUBE-CROSS, HITCH
3	03-24-1009	1	EA	Y	PLATE-BASE, HITCH
4	03-24-1010	1	EA	N	PLATE-TOP, HITCH
5	03-24-1011	2	EA	N	PLATE-END, HITCH
6	03-24-1012	4	EA	Y	GUSSET-HITCH
7	03-24-1019	1	EA	Y	ID PLATE-HITCH
8	19-13-171	4	EA	Y	RIVET 3/16



03-24-1006

- NOTES:
- ALL WELDS IN ACCORDANCE WITH MCI WELD STANDARD 1004B-3.
  - DRESS ALL WELDS.
  - DO NOT WELD THIS EDGE.
  - LOCATE ID PLATE AFTER PAINT AS SHOWN. FASTEN PLATE WITH 19-13-171 RIVETS.
  - PAINT WITH MCI HIGH GLOSS ENAMEL AS PER MCI STD 25-0356.
  - ORIENT PRE-DRILLED HOLES IN ITEM 2 AS SHOWN.

 MOTOR COACH INDUSTRIES <small>FORM RM 180E99 REV B</small>	
<b>HITCH-ASSY</b>	
03-24-1006	