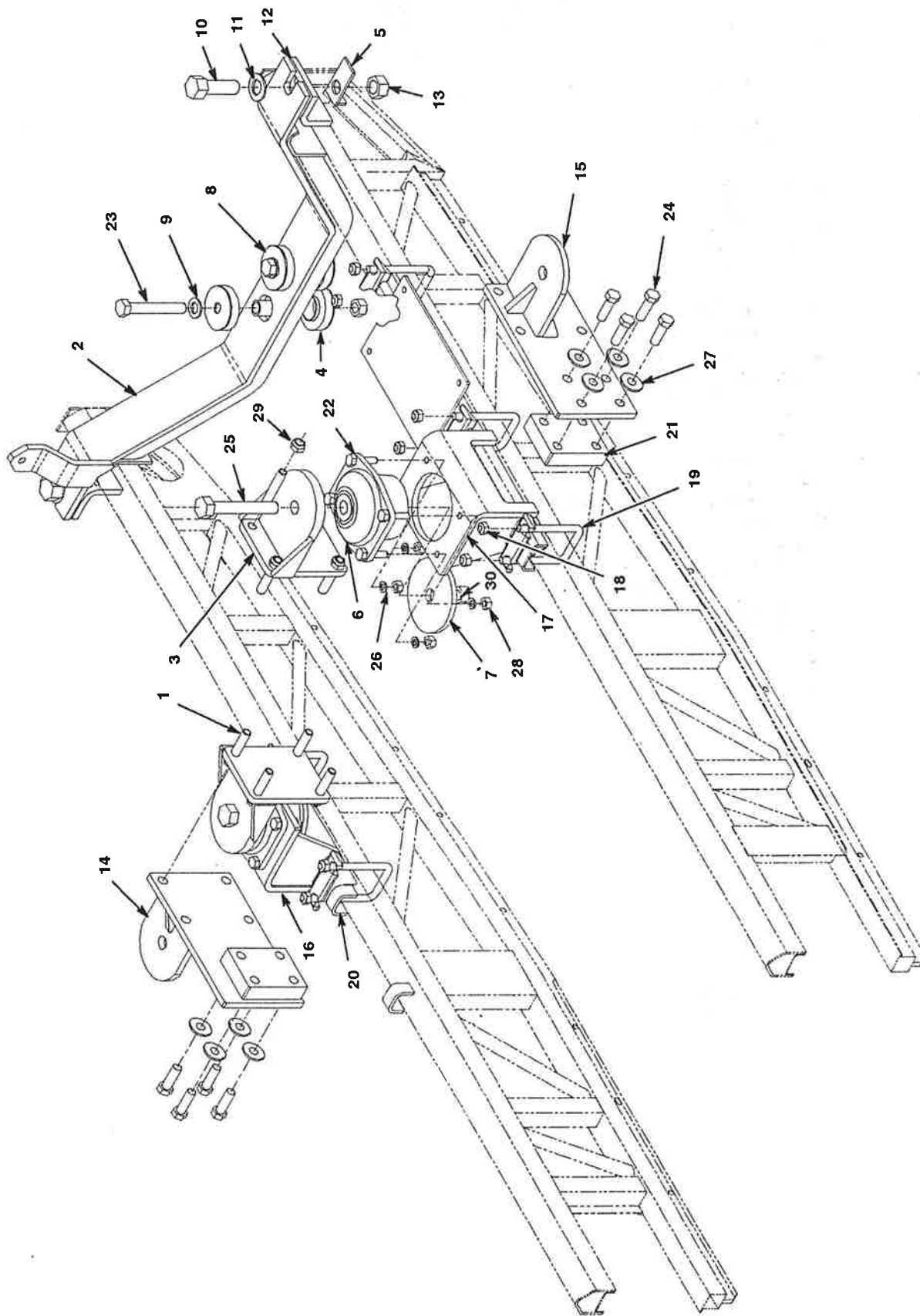


PARTS MANUAL

Date 7-1-94

Page 8J.1804



C0271

CRADLE ASSEMBLY & MOUNTING PARTS SERIES 50 DDEC ENGINES

PARTS MANUAL

Date 7-1-94

Page 8J.1805

Key	Part Number	Description	Note	Qty
CRADLE ASSEMBLY & MOUNTING PARTS SERIES 50 DDEC ENGINES				
1	8G-18-67	Stud - Trans Mt		8
2	8G-18-106	Trunnion Assy		1
3	8G-18-118	Mount Assy - Rear (W/Ht746 Trans)		2
4	8G-18-120	Spacer		2
5	8G-18-122	Bracket Assy - Stop		2
6	8G-18-123	Mount - Rear		2
7	8G-18-124	Washer		2
8	8G-18-125	Mount - Front		2
9	8G-18-126	Washer		2
10	8G-18-130	Bolt		2
11	8G-18-131	Washer		4
12	8G-18-132	Bracket		4
13	8G-18-135	Nut		2
14	8G-18-137	Mount Assy - Rear, RH (W/B500 Trans)		1
15	8G-18-138	Mount Assy - Rear, LH (W/B500 Trans)		1
16	8G-18-139	Mount Assy - Rear, RH (W/Ht746 Trans)		1
17	8G-18-146	Mount Assy - Rear, LH (W/Ht746 Trans)		1
18	8C-18-81	Nut - U-Bolt (Alt 8K-18-16)		10
19	8J-18-104	U-Bolt - Eng Mtg		5
20	3F-50-39	Channel		1
21	13L-2-124	Spacer - W/B500 Trans		2
22	19-1-305	Capscrew (7/16-20 x 2") Hex		8
23	19-1-407	Capscrew (1/2-20 x 1 1/2") Hex Gr 8		4
24	19-1-1400	Capscrew (5/8-18 x 4 1/2") Hex Gr 8		2
25	19-1-1461	Capscrew (M16 x 2 Gr 8.8 x 75mm) W/B500 Trans		8
26	19-1-1462	Capscrew (3/4-16 x 6 1/2") Gr 8 - W/Ht746 Trans		2
27	19-2-29	Lockwasher (1/2")		4
28	19-2-30	Lockwasher (7/16")		8
29	19-2-302	Lockwasher (M16) W/B500 Trans		8
30	19-3-17	Nut (7/16-20) Hex Gr 8		8
31	19-3-18	Nut (1/2-20) Hex		4
32	19-3-153	Locknut (5/8-18) Hex		8
33	19-3-457	Locknut (5/8-18) Stover		2
34	19-3-477	Locknut (3/4-16) Stover Gr 8		2
35	8G-18-104	Spacer		2