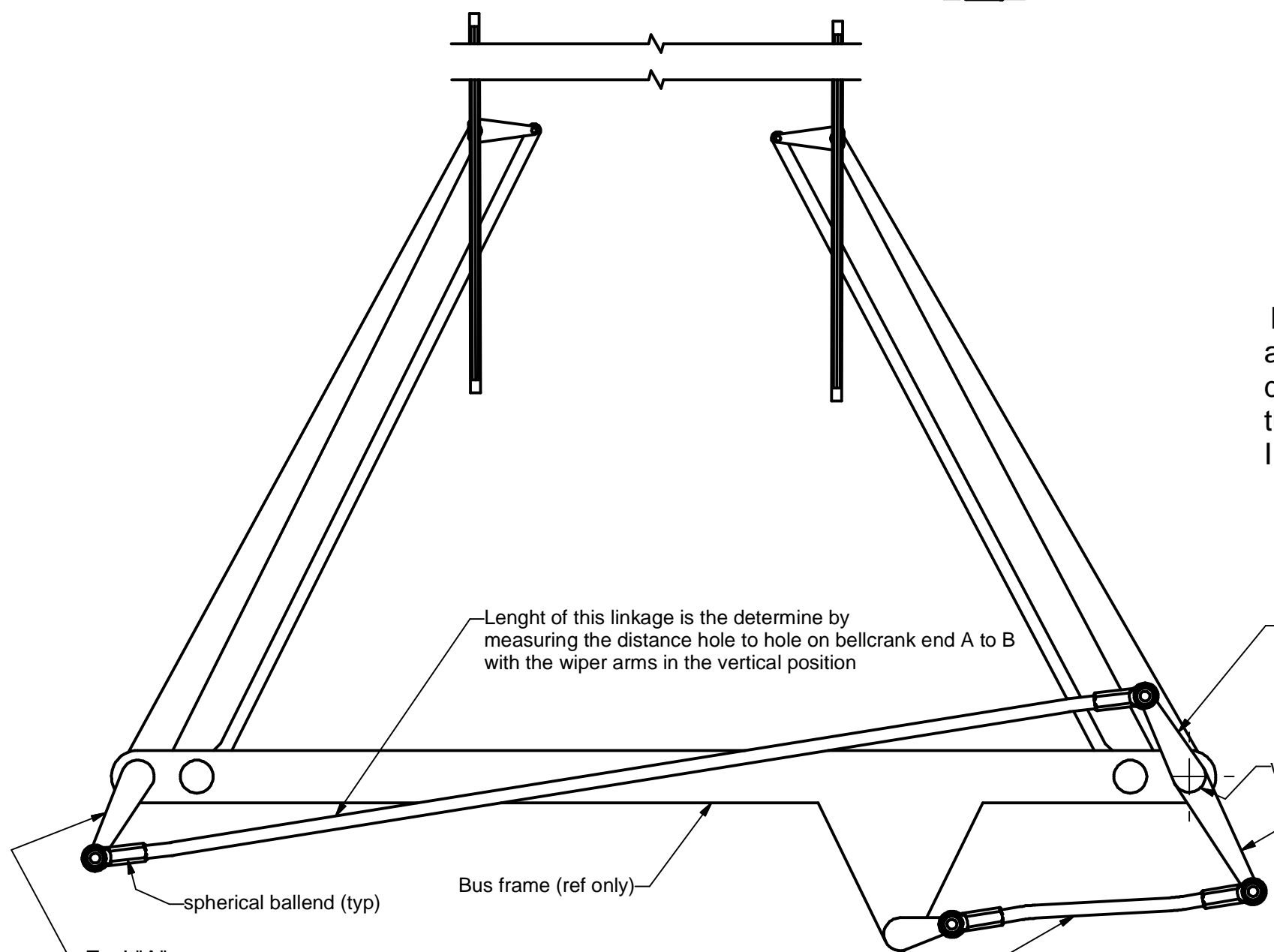


Spherical Ballend
/w threaded end

Note: It is important to keep the mass of the linkage as light as possible while maintaining strength so the linkage doesn't bend. This keeps the reactionary forces down when the wipers change direction. I use light wall hydraulic tube so I could bend the linkage to align with end plates



Length of this linkage is the determine by measuring the distance hole to hole on bellcrank end A to B with the wiper arms in the vertical position


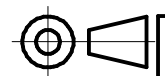
End "B"
This bellcrank end was original with the air wipers. I used the original length and hole position. But was positioned 180° deg from end "A"

End "D"
This bellcrank end has be made and to be welded flush with end "B" plate and the hole position for the linkage from the motor will determine the stroke length. This length and hole poition is the on you have to screw around with

End "A"
This bellcrank end was original with the air wipers.

End "C"
This bellcrank end was original with the new Elec. wiper motor. I used the original length and hole position. You will have to rotate this bellcrank into position on the motor, so it shuts off in the right place.

This linkage should have an ajustable length to position the arms in the stopped position

UNLESS OTHERWISE SPECIFIED DIMENSION TOLERANCES ARE:		 ABSCISSA DESIGN	P.O. BOX 4401 Lower Nicola, B.C. V0K 1Y0 Ph 250-378-6885	
DECIMALS	ANGULAR		MAT:	PROJECT
.X +/- .050	+/- 0.5	# REQ PER UNIT		
.XX +/- .010		PART / DWG NO.	CUSTOMER	
.XXX +/- .005		SCALE	REV	
Third Angle Proj		FILE NAME	SHEET 1 of 1	
DRAWN BY Ron Walker	DATE 04/03/2004	PART DESCRIPTION		
F:\PROJECTS\Inventor Projects\PROJECTS\Bus\Workspace\Wiper Assembly.ipt				